



HUTTING 46

SINCE 1975

HUTTING
—YACHTS—

VAN COSSA NIEN
COSSA NIEN
NAVAL ARCHITECTS



FIER
MAKKUM

HUTTING 46

THE IDEAL LONG-DISTANCE CRUISER

From miles away you recognize the renowned Hutting line from the water. Robust and solid, yet elegant with clearly defined classic lines. The Hutting 46 Explorer; the ideal long-distance cruiser exclusively built to your style.

The main design aspects are considered:

- elegant Hutting lines
- high performance sailing characteristics
- very comfortable sailing behavior
- in any detail an excessive focus on safety and quality



“WITH OUR EXPERTISE IN HYDRODYNAMICS AND PERFORMANCE FOCUSED DESIGNS, WE GUARANTEE THE HUTTING 46 HAS OUTSTANDING SAILING PERFORMANCE.”

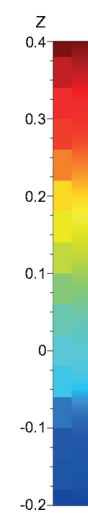
NIELS MOERKE - MD VAN OOSSANEN NAVAL ARCHITECTS

DESIGNED FOR ULTIMATE PERFORMANCE

The Hutting 46 Explorer is designed by Van Oossanen naval architects, specialists in hydrodynamics and the design of sailing yachts with specific performance requirements. Leveraging their expertise, they have created various sailing yachts for prestigious competitions such as the America's Cup.

The design comes with two types of bulb keel types: one short variant with winglets resulting in a total draft of 1.9 meters and a longer version without winglets resulting in a total draft of 2.4 meters; both variants achieve nearly identical performance.

The bulb dimensions are meticulously calculated using cutting-edge hydrodynamical technology. Additionally, the extendable bowsprit provides the flexibility to deploy a Code zero or Helix, to increase optimal tuning capabilities in any weather condition ensuring safety, control, speed and optimal sailing performance.

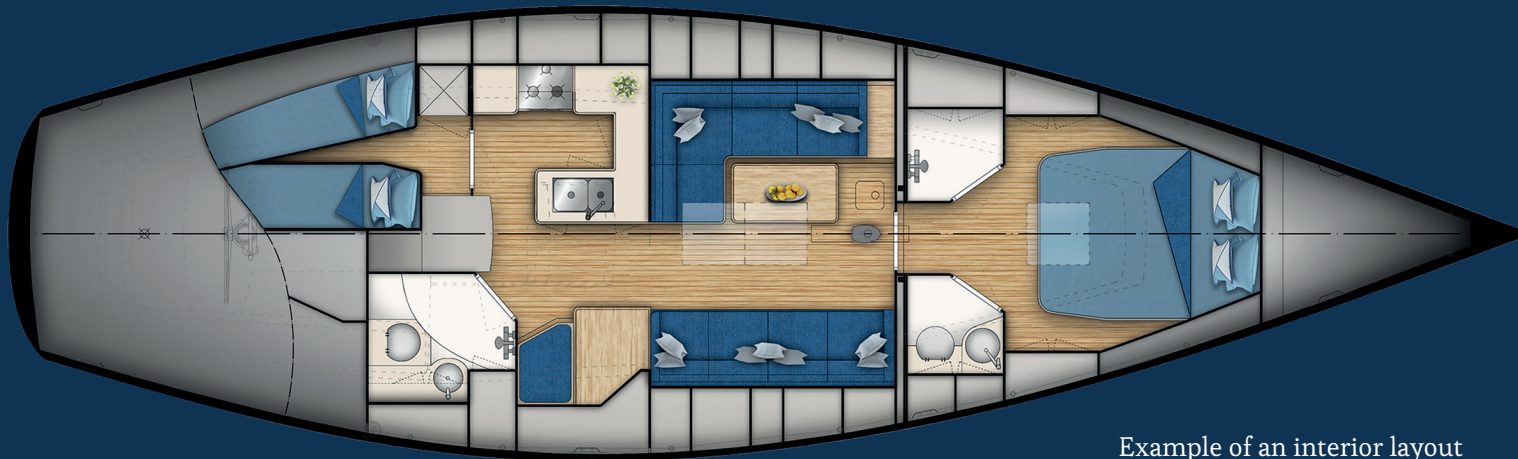




INTERIOR

Whether you prefer a classic, modern, cozy, practical, or sportive interior, our offerings cater to solo sailors or those sailing with the whole family. We provide a fully customizable interior, allowing you to design your layout, choose materials, and select colors. Our highly experienced team of craftsmen employs high-quality materials, precision, and skills to bring your vision to life in the construction of your Hutting 46. The result is a unique and exclusive yacht that reflects your identity.

Safety and comfort are paramount, with worldwide recognition for high safety levels and a secure grip throughout the yacht, seamlessly integrated with aesthetic appeal. Where style meets functionality with smart storage solutions and a comfortable 2.00m headroom, we guarantee you your ultimate home away from home.



Example of an interior layout

SPECIFICATIONS HUTTING 46

STANDARD SPECIFICATIONS

Design

Van Oossanen Naval Architects

Material

Aluminium

Length

13.90 m

Beam

4.20 m

Draft

2.30 m

Displacement

14.50 ton

Ballast

4500 kg lead

Sails

103.8 m²

Water Tanks

2 x 300 liters

Fuel Tanks

500 liters

The sailing yacht is delivered with CE-certification class A.

1. HULL

- Plate thickness hull 1st skin plate from keel 8mm
- 2nd skin plate from keel 7mm
- other skin plating and transom 6 mm.

2. PAINTWORK

After blasting, the entire hull is provided with an epoxy coating on the outside.

Down to and including the waterline, the hull has a smooth finish on the outside and is sprayed in the highest quality. The bottom is provided with antifouling. The inside of the hull has an epoxy coating. The color of the hull, including the color of the waterline, the ship's name and home port, are of the owners choice.

3. DECK AND SUPERSTRUCTURE

The entire aluminum deck is finished with a 16 mm thick teak deck. A teak caprail is installed. The cockpit and cabin superstructure are made of water-proof plywood with glass fiber/epoxy. Teak is applied to the cockpit floor, cockpit benches, cockpit edges and on the cabin superstructure.

4. INSULATION

The inside of the ship is insulated from floor to ceiling with 50mm melamine insulation. The storage spaces under the aft deck and the forepeak are not insulated.

5. ENGINE

Yanmar 4JH110 marine diesel 4 cylinder Turbo with intercooler, maximum power 110 hp at 3200 rpm. ZF 25 gearbox 1.93-2.80. 12 Volt installation semi double insulated. Intercooling system consisting of heat exchanger, expansion tank and self-priming outboard pump. Water-cooled exhaust manifold. Two

alternators are mounted on the engine; one of 12 Volt/125 Amp. and one 24V 110A with external 3-stage Alpha pro regulator.

The motor is semi-mass-free.

Dashboard with tachometer, voltmeter, oil pressure gauge, hour meter, water temperature, starter switch, charge current control and alarm buzzers. Water-cooled exhaust with waterlock.

6. MAST & RIGGING

- Length 20 m, aluminium anodized painted Hutting-white
- 3 Aluminium winch pads, isolated (175 mm).
- 2 Aluminium cleats 7" 178 mm, 5 aluminium cleats 5"127 mm.
- Tri-coloured masthead light including anchor light (LED).

Steaming/-deck light with protective brace mounted on forward side of the mast (LED).

- Mainsail, approx 60.29 m2
- Rolling genoa, approx. 43.50 m2
- Helix furling gennaker, approx. 142.88 m2

7. ACCOMMODATION

- Owner's cabin including shower room and toilet
- Saloon
- Chart table
- U-shaped galley
- Guest cabin
- Toilet + shower room
- Technical room
- Engine Room accessible via stairs, toilet and technical room

8. HEATING

- Webasto hot air heating installation, type Airtop 5000 diesel, outlets are located in all main rooms and in the wet-clothing cupboard.

- Dickinson diesel oil heater type Alaska

9. ELECTRIC INSTALLATION

The electrical installation is installed in accordance with the latest version of the CE requirements.

General: The wiring consists of Class 5 and Class 6 Marine cable.

- The 230V installation consists of:

230 Volt shore power connection with 25mtr shore power cable

3.6 Kw isolation transformer 230V/110V

230V fuse box with earth leakage circuit breaker 230V switch

box shore voltage / inverter

12V/10 Ah automatic IVO battery charger (starter battery) Mass

24/100-C (230V) combi battery charger/inverter

- The DC 12V-24V system is provided with:

4 x Mastervolt Battery Lithium – Ion Mk2 24/5000Wh (total 15000 Wh.)

The Mastervolt Lithium-Ion system is installed under the supervision of Mastervolt. At the chart table there is a

Mastervolt switch panel consisting of:

a switch panel made to customer specification. Remote control 24 V battery charger / inverter.

1 x battery 12V 90 amp Mastervolt (starter battery for Yanmar.)

Battery charger for starter battery.

BTM 3 battery consumption meters (for 3 groups). 24V/12V Hull isolation control system.

1 VDO Diesel fuel gauge

2 VDO water tank gauges

1 VDO waste water tank meter

The navigation lights can be operated on the switch panel.

10. CONSTRUCTION TIME

The construction time of a Hutting 46 is approx. 12 - 14 months after signing the order.

11. INVESTMENT

The above stated specifications apply to the standard version of the Hutting 46 explorer, according to his;

the investment of a Hutting 46 explorer will be € 1.400.000,-

Prices excluding VAT.

One of the most important benefits of Hutting Yachts is the flexibility. All Hutting yachts are built to the individual specifications of the client. After a basic design is agreed, you can choose from a wide range of possibilities within that basic design framework. Therefore, the prices given are an indication price which can vary based on your personal preferences in materials, instruments and sail equipment.

These specifications and prices apply at the time of printing and last three months. Continuing development of our yachts may result in alteration of figures, materials or fittings without prior notice.

Makkum, January 2023

PROCESS

We start by understanding your vision for the ideal sailing yacht. Based on this, we create a personalized plan, guiding you through decision-making using our expertise and insights from Hutting sailors.

Drawings are continuously refined until perfection. The aluminum hull is crafted by our specialized supplier, with every step supervised and quality-controlled by our team. Upon arrival at the yard, our skilled team ensures the renowned Hutting quality. Construction of the Hutting 46 takes around 12-14 months, with regular updates to keep you involved in bringing your exclusive yacht to life.

After completion, you get a berth in the Hutting harbor for the first weeks. We will sail with you to familiarize you with the capabilities of your yacht.

What follows is ultimate freedom. But do not worry: as a new member of the 'Hutting Family' our world-wide service reaches as far as you decide to sail.



MORE INFORMATION

Step aboard and discover the Hutting 46 Explorer yourself.
Meet our craftsman and explorer the endless possibilities for
creating your ideal interior yourself, by viewing our fleet at
the harbour of Hutting Yachts.

Discover our exclusive aluminum sailing yachts; be welcome!