



Hutting 46

SINCE 1975

HUTTING
— YACHTS —

VAN OSSANEN
NAVAL ARCHITECTS



The optimal long distance cruiser

From miles away, you recognise the distinguished Hutting line on the water. Robust and solid, yet elegant with clearly defined classic lines, the Hutting 46 Explorer is the ideal long distance cruiser.

KEY POINTS:

- Elegant Hutting lines
- High-performance sailing characteristics
- Singlehanded sailing
- Very comfortable sailing behavior
- Expert focus on safety in construction and while sailing
- 100% tailor-made interior

The Hutting 46 is specially designed for ultimate performance by Van Oossanen Naval Architects, who are known for their expertise in hydrodynamics and precise designs. Leveraging their skills, they have created various sailing yachts for prestigious competitions such as the America's Cup.

“With our expertise in hydrodynamics and performance focussed designs, we guarantee the Hutting 46 has outstanding sailing performance.”

NIELS MOERKE - MD VAN OOSSANEN NAVAL ARCHITECTS

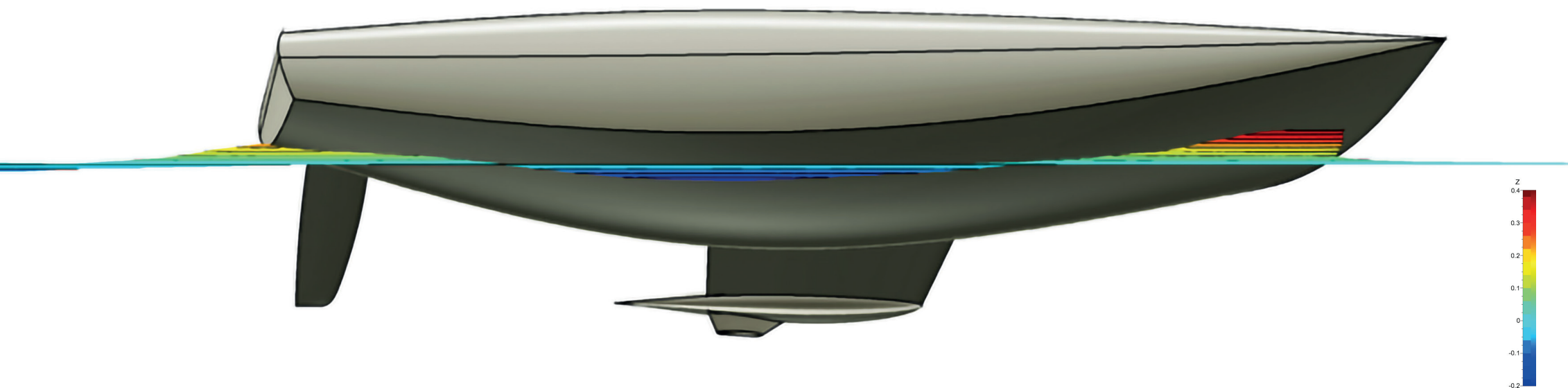


Computational Fluid Dynamics (CFD) to optimise performance

To optimise the design's performance, state-of-the-art Computational Fluid Dynamics (CFD) calculations were employed. These calculations, commonly used in the aircraft and automotive industries, precisely calculate the flow around the hull, keel, and rudder. The figure below displays the wave contours of the Hutting 46 Explorer sailing downwind, illustrating the minimal resistance generated by low waves.

To ensure the highest level of safety and comfort in rough sea conditions, the designer kept the foreship deeper underwater than is typically used in the design of modern racing vessels.

The hull's transom is kept relatively narrow, enhancing its behaviour in waves. The height of the transom above the water was chosen to optimally utilise the entire length of the hull, allowing the wave to leave the transom at an ideal angle.



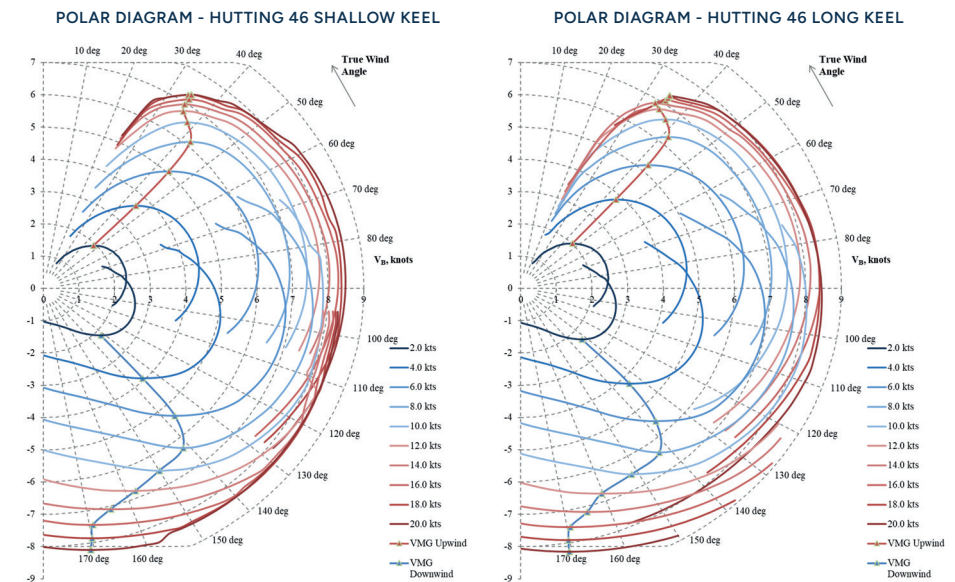
Two Keel Variants

The design offers two keel types to suit every long-distance cruiser, both achieving nearly identical performance:

- Shallow with winglets and trim-tab to tune performance in any condition, resulting in a total draft of 1.9 meters; ideal for ocean cruising and close coastal sailing
- Long keel without winglets, a well-known, straightforward keel-type resulting in a total draft of 2.4 meters; ideal for ocean cruising

Sailplan optimisation by VPP calculations

The yacht's sailing plan has been optimised using a Velocity Prediction Program (VPP), a tool that calculates the yacht's performance at various desired wind strengths and headings. The software considers crucial factors such as stability, resistance, and transverse force. The yacht's performance, resulting from the optimised sail plan and VPP calculations, is illustrated in the polar diagram. The figures on the right depicts the performance for both the shallow keel (1.90m draft, with trim tab and winglets) and the deep keel variant (2.4m draft), with their performances being nearly identical.



The highest level of safety

All decisions have been carefully made to ensure the highest level of safety, a crucial aspect for which our Hutting yachts are well-known. Consequently, the aluminum hull construction is meticulously designed, integrating the keel seamlessly into the hull structure, unlike the separate mounting often found in many mass-produced yachts. This design enhances stability and comfort during sailing, delivering the utmost sense of safety and security through a unified aluminum keel and hull construction.

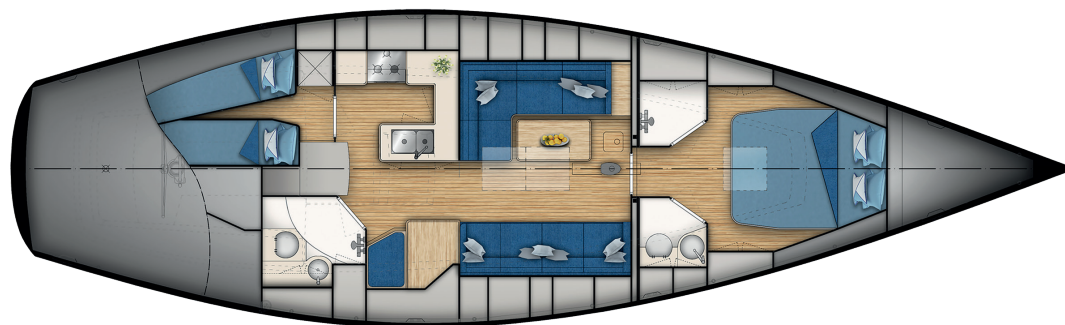




A fully customisable interior

Whether you prefer a classic, modern, homely, practical, or sportive interior, our offerings cater to solo sailors or those sailing with the whole family. We provide a fully customisable interior, allowing you to design your layout, choose materials, and select colors. Our team of craftsmen use high-quality materials, precision, and their skills to bring your vision to life. The result is a unique and exclusive yacht that reflects your identity.

Safety and comfort are paramount, with worldwide recognition for our high safety levels and a secure grip throughout the yacht, seamlessly integrated with aesthetic appeal. Where style meets functionality with smart storage solutions and a comfortable 2.00m headroom. We guarantee you your ultimate home away from home.



EXAMPLE OF AN INTERIOR LAYOUT



Specifications Hutting 46

Standard specifications

Design

Van Oossanen Naval Architects

Material

Aluminium

Length

13.90 m

Beam

4.20 m

Draft

2.30 m

Displacement

14.50 ton

Ballast

4500 kg lead

Sails

103.8 m²

Water Tanks

2 x 300 liters

Fuel Tanks

500 liters

The sailing yacht is delivered with CE-certification class A.

1. HULL

- Plate thickness hull 1st skin plate from keel 8mm
- 2nd skin plate from keel 7mm
- other skin plating and transom 6 mm.

2. PAINTWORK

After blasting, the entire hull is provided with an epoxy coating on the outside.

Down to and including the waterline, the hull has a smooth finish on the outside and is sprayed in the highest quality. The bottom is provided with antifouling. The inside of the hull has an epoxy coating. The color of the hull, including the color of the waterline, the ship's name and home port, are of the owners choice.

3. DECK AND SUPERSTRUCTURE

The entire aluminum deck is finished with a 16 mm thick teak deck. A teak caprail is installed. The cockpit and cabin superstructure are made of water-proof plywood with glass fiber/epoxy. Teak is applied to the cockpit floor, cockpit benches, cockpit edges and on the cabin superstructure.

4. INSULATION

The inside of the ship is insulated from floor to ceiling with 50mm melamine insulation. The storage spaces under the aft deck and the forepeak are not insulated.

5. ENGINE

Yanmar 4JH110 marine diesel 4 cylinder Turbo with intercooler, maximum power 110 hp at 3200 rpm. ZF 25 gearbox 1.93-2.80. 12 Volt installation semi double insulated. Intercooling system consisting of heat exchanger, expansion tank and self-priming outboard pump. Water-cooled exhaust manifold. Two alternators are mounted on

the engine; one of 12 Volt/125 Amp. and one 24V 110A with external 3-stage Alpha pro regulator. The motor is semi-mass-free.

Dashboard with tachometer, voltmeter, oil pressure gauge, hour meter, water temperature, starter switch, charge current control and alarm buzzers. Water-cooled exhaust with waterlock.

6. MAST & RIGGING

- Length 20 m, aluminium anodised painted Hutting-white
- 3 Aluminium winch pads, isolated (175 mm).
- 2 Aluminium cleats 7" 178 mm, 5 aluminium cleats 5" 127 mm.
- Tri-coloured masthead light including anchor light (LED).

Steaming/-deck light with protective brace mounted on forward side of the mast (LED).

- Mainsail, approx 60.29 m²
- Rolling genoa, approx. 43.50 m²
- Helix furling gennaker, approx. 142.88 m²

7. ACCOMMODATION

- Owner's cabin including shower room and toilet
- Saloon
- Chart table
- U-shaped galley
- Guest cabin
- Toilet + shower room
- Technical room
- Engine Room accessible via stairs, toilet and technical room

8. HEATING

- Webasto hot air heating installation, type Airtop 5000 diesel, outlets are located in all main rooms and in the wet-clothing cupboard.
- Dickinson diesel oil heater type Alaska

9. ELECTRIC INSTALLATION

The electrical installation is installed in accordance with the latest version of the CE requirements.

General: The wiring consists of Class 5 and Class 6 Marine cable.

- The 230V installation consists of:

230 Volt shore power connection with 25mtr shore power cable 3.6 Kw isolation transformer 230V/110V

230V fuse box with earth leakage circuit breaker 230V

switch box shore voltage / inverter

12V/10 Ah automatic IVO battery charger (starter battery)

Mass 24/100-C (230V) combi battery charger/inverter

- The DC 12V-24V system is provided with:

4 x Mastervolt Battery Lithium – Ion Mk2 24/5000Wh (total 15000 Wh.)

The Mastervolt Lithium-Ion system is installed under the supervision of Mastervolt. At the chart table there is a Mastervolt switch panel consisting of:

a switch panel made to customer specification. Remote control 24 V battery charger / inverter.

1 x battery 12V 90 amp Mastervolt (starter battery for Yanmar.) Battery charger for starter battery.

BTM 3 battery consumption meters (for 3 groups). 24V/12V

Hull isolation control system.

1 VDO Diesel fuel gauge

2 VDO water tank gauges

1 VDO waste water tank meter

The navigation lights can be operated on the switch panel.

10. CONSTRUCTION TIME

The construction time of a Hutting 46 is approx. 12 - 14 months after signing the order.

11. INVESTMENT

The above stated specifications apply to the standard version of the Hutting 46 explorer, according to his; the investment of a Hutting 46 explorer will be € 1.400.000,- Prices excluding VAT.

One of the most important benefits of Hutting Yachts is the flexibility. All Hutting yachts are built to the individual specifications of the client. After a basic design is agreed, you can choose from a wide range of possibilities within that basic design framework. Therefore, the prices given are an indication price which can vary based on your personal preferences in materials, instruments and sail equipment.

These specifications and prices apply at the time of printing and last three months. Continuing development of our yachts may result in alteration of figures, materials or fittings without prior notice.

Makkum, January 2024



More information

Step aboard and discover the Hutting 46 Explorer yourself. Meet our craftsman and explorer the endless possibilities for creating your ideal interior yourself, by viewing our fleet at the harbour of Hutting Yachts.

Discover our exclusive aluminum sailing yachts; be welcome!